



# COMPANY PROFILE







# TABLE OF CONTENTS

*Please click on the **titles / buttons**  
to navigate the company profile.*

**DDN**  
DYNAMIC DESIGN STUDIO

COMPANY PROFILE



# WELCOME TO OUR STUDIO

DEC Dynamic Design Studio, a multidisciplinary Architectural Design firm with offices in Dubai, Abu Dhabi and Riyadh along with professional affiliations with leading firms in Egypt, Italy and the United States provide efficient, sustainable and unique designs which help to transform the developments of tomorrow.

Our Experienced team of International Architects, Interior Designers, Creative Specialists, Engineers, and Project Managers are able to take any project from Concept Design through Construction Completion.

DEC  
DYNAMIC DESIGN STUDIO

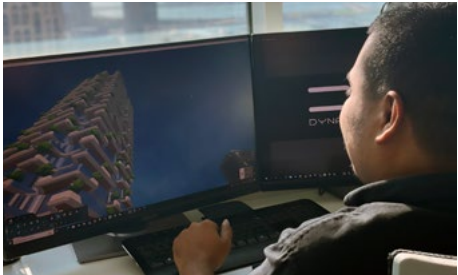
COMPANY PROFILE

HIGHLY QUALIFIED  
PROFESSIONALS WITH  
THE MISSION OF

# TRANSFORMING TOMORROW

DEC Dynamic Design Studio, (formerly known as DEC Dynamic Engineering Consultants) was founded in 2006 with the mission to provide professional architectural and engineering services to Dubai during its rapid transformation into one of the world's premiere destinations for tourism and centers for commerce. Over the past two decades, DEC Dynamic Design Studio has expanded its presence throughout the region with the establishment of branch offices in Abu Dhabi and Riyadh, and have extended their global reach with carefully curated professional affiliations with leading firms in Egypt, Italy and the United States.

With extensive experience in the hospitality, leisure & entertainment, commercial, industrial, residential and retail sectors, DEC Dynamic Design Studio provides professional and efficient services from concept design through construction completion that always exceeds our Clients' expectations.







DEC Dynamic Design Studio is committed to excellence in everything we do. Our mission is to transform tomorrow, in a socially and environmentally sustainable way.

Our designs reflect this by integrating innovation, technology, and creativity to obtain unique, efficient and cutting-edge final solutions to benefit society. We know that our people are the secret to our success and therefore we provide a working environment that attracts only the best. Our experienced team of international Architects, Interior Designers, Creative Specialists, Engineers, and Project Managers are able to take any project from Concept Design through Construction Completion and have consistently delivered successful projects for clients around the world.





**Nasser Al Hai**  
Chief Executive Officer

**Years of Experience:** 23  
**Nationality:** Emirati

AN ACCOMPLISHED CIVIL ENGINEER, REGISTERED FIRST-CLASS EXPERT WITH THE MINISTRY OF JUSTICE AND FOUNDER OF DEC DYNAMIC DESIGN STUDIO, ENG. NASSER AL HAI HAS BEEN AT THE FOREFRONT OF THE UAE CONSTRUCTION INDUSTRY THROUGHOUT HIS CAREER.

After successfully establishing the standards and protocols for Trakhees (Ports, Customs & Free Zone Corporation), as the Head of Building Permits, Infrastructure and Marine he established DEC Dynamic Design Studio, a multidisciplinary architectural design studio which could serve the broader UAE market during its rapid expansion.

Under his leadership, DEC Dynamic Design Studio has established itself as one of the UAE's premier domestic consultants and have been the Architect of Record for many iconic projects including Atlantis The Royal and Dubai Parks & Resorts. These successes have led to the company's global expansion and his active leadership and overall vision navigates the company's operations to ensure that it remains at the forefront of the design and construction industry.





**Fouad Chater**  
Chief Operating Officer

**Years of Experience:** 21  
**Nationality:** American/Canadian

FOUAD LEADS THE OPERATIONS OF DEC DYNAMIC DESIGN STUDIO AND DRIVES ITS OVERALL VISION AND STRATEGY BY DEVELOPING AND IMPLEMENTING GROWTH PLANS AND DEALING DIRECTLY WITH CLIENTS' SENIOR MANAGEMENT TO ENSURE THE HIGHEST QUALITY PROJECT COMPLETION.

His collaborative leadership style and unique ability to assess each situation from the vantage points of the client, consultant, and contractor enables him to maintain a comprehensive understanding of requirements and potential issues and effectively develop winning strategies to suit any situation.

As an accomplished Civil Engineer and project management professional he has overseen the construction of some of the most premier developments in the UAE, such as Atlantis The Royal and has been recognized by the Canadian Society of Civil Engineering for his contributions to the field.





**Mattia Gambardella**  
Design Director

**Years of Experience:** 22  
**Nationality:** Italian

MATTIA LEADS DEC DYNAMIC DESIGN STUDIO'S DESIGN ACTIVITIES AND HAS EXTENSIVE INTERNATIONAL EXPERIENCE IN COMPANIES SUCH AS ZAHA HADID ARCHITECTS, KOHN PETERSON FOX AND PARSONS.

He is an established designer, researcher and critic with several high-profile publications and award-winning projects around the globe.

Mattia has been a principal researcher in Ocean, instructed at the London Metropolitan University and the UCL Bartlett School of Architecture.

He has appeared as a guest critic at the Architectural Association, University of Westminster and the University of East London.



**Camilo Chacon**  
Interior Design Director

**Years of Experience:** 30  
**Nationality:** Colombian

CAMILO LEADS DEC DYNAMIC DESIGN STUDIO'S INTERIOR DESIGN PROJECTS AND HAS HELD KEY POSITIONS IN SEVERAL INTERNATIONAL AWARD-WINNING COMPANIES SUCH AS AEI AND BURTHILL WHERE HE HAS DIRECTED TEAMS OF OVER 100 ARCHITECTS AND INTERIOR DESIGNERS TO DELIVER UP TO 36 HIGH VALUE PROJECTS IN PARALLEL.

His achievements also include lecturing at the Harvard Graduate School of Design and has held the post of adjunct professor at the American University of Sharjah.



**Massimiliano De Vito**  
Design Production Director

**Years of Experience:** 35  
**Nationality:** Italian

**MASSIMILIANO HEADS THE PRODUCTION OF DETAILED DESIGN AND CONSTRUCTION DOCUMENTATION AT DEC DYNAMIC DESIGN STUDIO.**

After an impressive career in Italy where he owned and operated his own Architectural design firm for 16 years, he migrated to the UAE market where he has led the design delivery of high profile projects such as Six Flags Theme Park, Legoland Theme Park, and Dubai Safari.



**Mamdouh Farrag**  
Projects Director

**Years of Experience:** 30  
**Nationality:** Egyptian

**MAMDOUH LEADS DEC DYNAMIC DESIGN STUDIO'S POST CONTRACT SERVICES.**

With extensive experience across the residential, hospitality, commercial, and leisure and entertainment sectors, he brings the expertise needed to manage, guide, and deliver projects of any scale and complexity. He has successfully led high-profile developments such as the Legoland Hotel, Motiongate and Bollywood theme parks, as well as several large-scale residential communities across Dubai.

Under his direct leadership, DEC's supervision teams consistently ensure full compliance with contract requirements and authority regulations, while safeguarding the client's interests at every stage.



**Hossam Khafaga**  
Legal & Contracts Director

**Years of Experience:** 15  
**Nationality:** Egyptian

**HOSSAM LEADS DEC DYNAMIC DESIGN STUDIO'S LEGAL AND CONTRACTS DEPARTMENT.**

He is an accomplished legal and contracts specialist with deep expertise in contract lifecycle management, legal compliance, and risk mitigation. Highly skilled in structuring commercial agreements and administering contracts, Hossam ensures legal integrity while safeguarding the interests of both DEC and its clients.

He provides strategic legal advice and support across all departments and contributes to DEC's Expert Witness Division, which is registered with the UAE Ministry of Justice, Dubai Courts, and various arbitration forums.



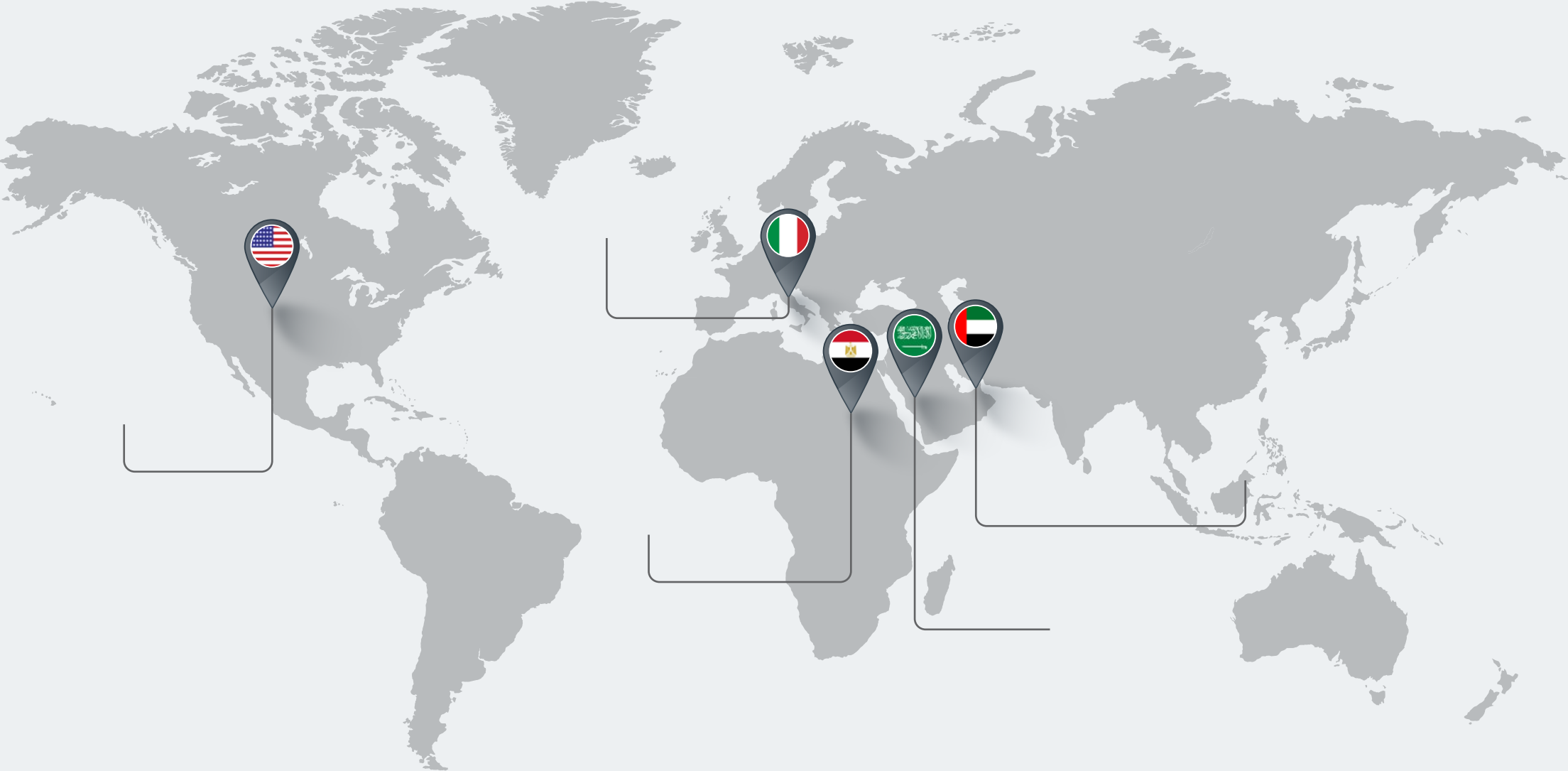
**Princess Layaoen**  
Administration Director

**Years of Experience:** 15  
**Nationality:** Filipino

**PRINCESS LEADS DEC DYNAMIC DESIGN STUDIO'S ADMINISTRATION AND HUMAN RESOURCES TEAM.**

She is recognized for her exceptional leadership, strong interpersonal skills, and a proactive, solutions-focused mindset. With a proven track record of driving organizational efficiency, she excels in managing cross-functional teams and implementing streamlined administrative processes.

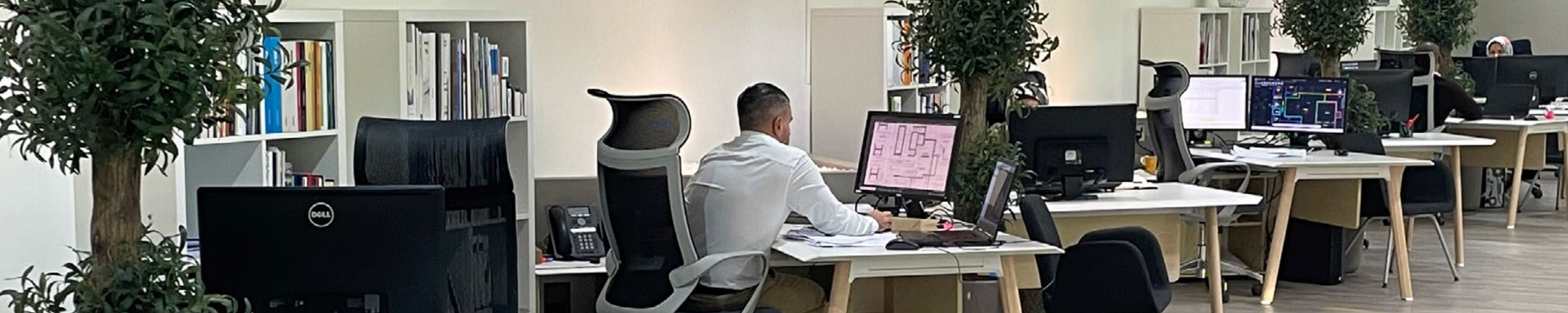
Her ability to boost productivity, optimize costs, and align operations with strategic goals makes her a key contributor to DEC's continued success in delivering outstanding service and ensuring consistent client satisfaction.











# OUR FIELDS OF EXPERTISE

Our extensive experience in both pre-contract and post-contract services provide a one-stop shop from initial concept design through to construction completion. In short, DEC Dynamic Design Studio does it all. We...

**Create. Design. Engineer. Supervise.  
Administer. Deliver.**

Whether architectural, structural, mechanical, electrical, theming & leisure, construction supervision, contract administration or a combination of any of these services is required, DEC Dynamic Design Studio focuses on the tiniest of details in order to provide thought-provoking, efficient, feasible and constructable solutions.

**DEC**  
DYNAMIC DESIGN STUDIO

COMPANY PROFILE



# Architectural

## Services

- Feasibility Study
- Interior Design
- Sustainability Design
- Architect Of Record
- Design Management
- Master Planning
- Conceptual Design
- Landscape Design
- Architectural BIM Models
- Project Management

Expertise

Architectural ←





# Structural

## Services

- RCC Structural Design
- Steel Structural Design
- Post-Tension Design
- Structural BIM Models
- Soil Improvement Design
- Dewatering Design
- Structural Value Engineering
- Field Assessment & Retrofit
- Deep Foundation Design
- Structural Peer Review
- Finite Element Analysis

Expertise

Structural ←



# Mechanical

## Services

- HVAC AC Ducting Design
- HVAC Ventilation Design
- Plumbing Storm Water Design
- Irrigation Network Design
- Mechanical Value Engineering
- Infrastructure Design
- Fire Fighting Design
- HVAC Chilled Water Design
- Plumbing Water Supply Design
- Plumbing Drainage Design
- Water Features & Swimming Pool Design
- Mechanical BIM Models
- LPG Network Design



Expertise

Mechanical ←





# Electrical

## Services

- Electrical Power Design
- ELV Design
- Fire Alarm Design
- Voice Evacuation Design
- Infrastructure Design
- Electrical BIM Models
- Electrical Value Engineering
- Electrical Lighting Design
- Security System Design
- Emergency Lighting Design
- IT & Telecom Design
- BMS Design
- Audio Visual Network Design

Expertise

Electrical ←



# Theming & Leisure

## Services

- Master Planning
- Theming Design
- Props & Public Art Design
- Infrastructure Design
- Park Wide Systems Design
- Park Wide Audio Design
- Ride & Attraction Design
- Food & Beverage Outlet Design
- Parade Control System
- Theatre Design

- Conceptual Design
- Show Set Design
- FF&E & OS&E Procurement
- Parking & Loading Design
- Park Wide Lighting Design
- Ride/Show Area Development
- Ride Procurement & Installation
- Event Control Center (ECC)
- Facility Control

## Expertise

Theming & Leisure ←





# Construction Supervision

## Services

- Site Supervision & Compliance
- Regulatory Compliance
- Engineer Of Record
- Environment, Health & Safety
- Quality Control & Quality Assurance
- Land Surveying

Expertise

Construction Supervision ←



# Contract Administration

## Services

- Tender Analysis
- Contract Preparation
- Contract Management
- Change Management
- Cost Control
- Planning & Progress Monitoring
- Quantity Surveying
- Claims Assessment
- Expert Witness

Expertise

Contract Administration ←



Since inception we have successfully serviced a multitude of Clients and have amassed a dynamic portfolio of Design, Construction Supervision and Contract Administration projects in the Hospitality, Residential, Commercial, Educational, Environmental, Industrial, and Leisure & Entertainment sectors.

**DDN**  
DYNAMIC DESIGN STUDIO

COMPANY PROFILE





# Selected Projects in **HOSPITALITY**

**DDC**  
DYNAMIC DESIGN STUDIO

COMPANY PROFILE









# Atlantis The Royal

**Location**  
Palm Jumeirah Crescent, Dubai

**Description**  
Atlantis The Royal, is an unparalleled destination located on the crescent of The Palm Jumeirah next to the original Atlantis. A new iconic landmark redefining the Dubai skyline, it features both residences for sale and hotel guest rooms surrounded by private gardens, cantilever pools, as well as an infinity pool overlooking the Arabian Gulf.

- DEC Dynamic Design Studio Scope**
- Architectural & Engineering Design Development & Coordination
  - Construction Supervision & Contract Administration
  - Architect of Record (AOR) / Engineering of Record (EOR)

|   |                                 |                                    |
|---|---------------------------------|------------------------------------|
| <b>Type</b><br>Hospitality, Commercial, Residential       | <b>Hotel Keys (Nos.)</b><br>795 | <b>F&amp;B (Nos.)</b><br>18        |
| <b>Category</b><br>Five-Star Luxury Resort and Residences | <b>Apartments (Nos.)</b><br>231 | <b>Swimming Pools (Nos.)</b><br>92 |
| <b>Status</b><br>Project Close-Out                        | <b>Retail (Nos.)</b><br>14      | <b>BUA (Sqm)</b><br>406,000        |
| <b>Completion Year</b><br>2023                            |                                 |                                    |







# Legoland Hotel

**Location**  
Dubai Parks and Resorts

**Description**  
The development located in Dubai Parks and Resorts is the first and only LEGOLAND® Hotel in the Middle East. It offers an ultimate family LEGO® adventure, complete with a dragon-guarded entrance, interactive LEGO® experiences and fully themed LEGO bedrooms.

- DEC Dynamic Design Studio Scope**
- Architectural, Engineering & Interior Design
  - Construction Supervision & Contract Administration
  - Architect of Record (AOR) / Engineering of Record (EOR)

|                                      |                                 |                                   |
|--------------------------------------|---------------------------------|-----------------------------------|
| <b>Type</b><br>Themed Boutique Hotel | <b>Hotel Keys (Nos.)</b><br>250 | <b>F&amp;B (Nos.)</b><br>5        |
| <b>Category</b><br>Four-Star         | <b>Apartments (Nos.)</b><br>1   | <b>Swimming Pools (Nos.)</b><br>1 |
| <b>Status</b><br>Completed           | <b>Retail (Nos.)</b><br>1       | <b>BUA (Sqm)</b><br>27,536        |
| <b>Completion Year</b><br>2021       |                                 |                                   |











# Diana Grand Hotel

**Location**  
Alassio, Savona, Italy

**Description**  
Diana Grand Hotel is located in Alassio, Italy and offers views of either the Ligurian hills or sea. This 4-Star hotel boasts classically decorated rooms, a selection of restaurants, a luxury wellness center and a panoramic pool.

**DEC Dynamic Design Studio Scope**  
→ Architectural & Interior Design  
→ Construction Supervision & Contract Administration

**Type**  
Resort Hotel

**Category**  
Four-Star

**Status**  
Completed

**Completion Year**  
2019

**Hotel Keys (Nos.)**  
72

**Apartments (Nos.)**  
16

**F&B (Nos.)**  
3

**Swimming Pools (Nos.)**  
1







# Grand Hotel Campione

**Location**  
Campione d'Italia, Como, Italy

**Description**  
Elegantly located on the shores of Lake Lugano, Italy, the Grand Hotel Campione has a magnificent view of the famous Monte San Salvatore and offers an intimate and infinitely pleasant home from home. The interiors are the result of a skillful mix between classic and modern coming together with cultural influences providing a feeling of excellence and luxury.

**DEC Dynamic Design Studio Scope**  
→ Architectural & Interior Design  
→ Construction Supervision & Contract Administration

**Type**  
Resort Hotel

**Hotel Keys (Nos.)**  
40

**Category**  
Five-Star

**F&B (Nos.)**  
1

**Status**  
Completed

**Swimming Pools (Nos.)**  
1

**Completion Year**  
2017











# Hotel Courtyard by Marriott

**Location**  
Al Barsha, Dubai

**Description**

Located in Al Barsha Dubai, this 4-star project is inclusive of Marriott-branded guest rooms. The contemporary development is formulated with the business travelers in mind and contains a selection of restaurants and amenities inclusive of a fitness center, spa, retail, meeting spaces and outdoor pools.

**DEC Dynamic Design Studio Scope**

- Architectural & Interior Design
- Construction Supervision & Contract Administration



**Type**  
Business Hotel

**Hotel Keys (Nos.)**  
216

**Category**  
Four-Star

**F&B (Nos.)**  
4

**Status**  
Completed

**Swimming Pools (Nos.)**  
1

**Completion Year**  
2019

**BUA (Sqm)**  
16,775







# Mama Shelter

**Location**  
Business Bay, Dubai

**Description**  
  
Located in Business Bay, Dubai, Mama Shelter’s 8th global location provides an urban refuge and creates a vibrant atmosphere for the short stay fly-through category in hospitality. This development includes both contemporary themed apartments and hotel rooms along with a generous offer of restaurants, bars and amenities.

- DEC Dynamic Design Studio Scope**
- Architectural & Interior Design
  - Construction Supervision & Contract Administration

|                                |                                 |                                   |
|--------------------------------|---------------------------------|-----------------------------------|
| <b>Type</b><br>Business Hotel  | <b>Hotel Keys (Nos.)</b><br>197 | <b>F&amp;B (Nos.)</b><br>7        |
| <b>Category</b><br>Five-Star   | <b>Apartments (Nos.)</b><br>192 | <b>Swimming Pools (Nos.)</b><br>4 |
| <b>Status</b><br>Completed     | <b>Retail (Nos.)</b><br>1       | <b>BUA (Sqm)</b><br>49,703        |
| <b>Completion Year</b><br>2025 |                                 |                                   |







Selected Projects in

# LEISURE & ENTERTAINMENT

DDC  
DYNAMIC DESIGN STUDIO

COMPANY PROFILE









# Motiongate Theme Park

**Location**  
Dubai Parks & Resorts

**Description**  
One of the main attractions in Dubai Parks and Resorts, this development provides an experience based on the magic of Hollywood. With Intellectual Property belonging to Dreamworks Animation, Columbia Pictures, Lionsgate and Smurfs Village, the guest experience and thrilling attractions are second to none.

- DEC Dynamic Design Studio Scope**
- Architectural & Engineering Design
  - Theming & Show Set Design
  - Rides & Attractions Design
  - Ride Installation & Commissioning
  - Props & Public Art Design
  - Signage & Wayfinding Design
  - Construction Supervision & Contract Administration
  - Architect of Record (AOR) / Engineering of Record (EOR)

|  |                             |
|--|-----------------------------|
| <b>Attractions &amp; Zones (Nos.)</b><br>8                 | <b>F&amp;B (Nos.)</b><br>9  |
| <b>Rides (Nos.)</b><br>26                                  | <b>Retail (Nos.)</b><br>12  |
| <b>Status</b><br>Completed                                 | <b>BUA (Sqm)</b><br>467,631 |
| <b>Completion Year</b><br>Phase 1: 2016<br>Expansion: 2021 |                             |







# Bollywood Parks

**Location**  
Dubai Parks & Resorts

**Description**  
One of the main attractions in Dubai Parks and Resorts, this park creates stories in the first-ever family-friendly theme park derived from greatest Bollywood blockbusters. The experience includes the diverse cultures of India and come together in an explosion of colors, music, and dance styles with stunt shows, rides & performances.

- DEC Dynamic Design Studio Scope**
- Architectural & Engineering Design
  - Theming & Show Set Design
  - Rides & Attractions Design
  - Ride Installation & Commissioning
  - Props & Public Art Design
  - Signage & Wayfinding Design
  - Construction Supervision & Contract Administration
  - Architect of Record (AOR) / Engineering of Record (EOR)

|                            |               |
|----------------------------|---------------|
| Attractions & Zones (Nos.) | F&B (Nos.)    |
| 10                         | 5             |
| Rides (Nos.)               | Retail (Nos.) |
| 18                         | 3             |
| Status                     | BUA (Sqm)     |
| Completed                  | 245,466       |

**Completion Year**  
Phase 1: 2016  
Expansion: 2021











# Legoland Waterpark

**Location**  
Dubai Parks & Resorts

**Description**  
  
The development located in Dubai Parks and Resorts is the first LEGOLAND® water park in the Middle East. Guests dive into family fun LEGO-themed water slides, temperature-controlled pools, and attractions.

- DEC Dynamic Design Studio Scope**
- Architectural & Engineering Design
  - Theming & Show Set Design
  - Rides & Attractions Design
  - Ride Installation & Commissioning
  - Signage & Wayfinding Design
  - Construction Supervision & Contract Administration
  - Architect of Record (AOR) / Engineering of Record (EOR)

|                                       |                       |
|---------------------------------------|-----------------------|
| <b>Attractions &amp; Zones (Nos.)</b> | <b>F&amp;B (Nos.)</b> |
| 13                                    | 2                     |
| <b>Status</b>                         | <b>Retail (Nos.)</b>  |
| Completed                             | 1                     |
| <b>Completion Year</b>                | <b>BUA (Sqm)</b>      |
| 2016                                  | 280,000               |
| <b>Water Slides (Nos.)</b>            |                       |
| 20                                    |                       |







# Laguna Water Park

**Location**  
Jumeirah, Dubai

**Description**

Laguna Waterpark located at the edge of Jumeirah Beach, Dubai, is a beachfront destination which offers thrilling water slides and endless waves. Guests can relax in luxury cabanas on the waterfront and enjoy a dip in the waterpark's beautiful infinity pool.

**DEC Dynamic Design Studio Scope**

- Architectural & Engineering Design
- Theming & Show Set Design
- Rides & Attractions Design
- Ride Installation & Commissioning
- Signage & Wayfinding Design
- Construction Supervision & Contract Administration
- Architect of Record (AOR) / Engineering of Record (EOR)

|                                       |                      |
|---------------------------------------|----------------------|
| <b>Attractions &amp; Zones (Nos.)</b> | <b>Retail (Nos.)</b> |
| 4                                     | 9                    |

|                            |                  |
|----------------------------|------------------|
| <b>Water Slides (Nos.)</b> | <b>BUA (Sqm)</b> |
| 5                          | 437,588          |

**Status**  
Completed

**Completion Year**  
2018











## Dubai Safari

**Location**  
Al Warqaa, Dubai

**Description**  
Located in Al Warqaa, Dubai, this fully themed eco-friendly safari park, at over 119-hectares, is one of the biggest man-made parks of its kind worldwide. It brings exotic themes to life and is home to more than 3,000 animals from all over the world.

- DEC Dynamic Design Studio Scope**
- Character Interpretation & Storyboards
  - Theming & Show Set Design
  - Props & Public Art Design
  - Signage & Wayfinding Design
  - Construction Supervision & Contract Administration

|                                       |                       |
|---------------------------------------|-----------------------|
| <b>Attractions &amp; Zones (Nos.)</b> | <b>F&amp;B (Nos.)</b> |
| 6                                     | 7                     |
| <b>Status</b>                         | <b>Retail (Nos.)</b>  |
| Completed                             | 2                     |
| <b>Completion Year</b>                | <b>BUA (Sqm)</b>      |
| 2018                                  | 1,190,000             |
| <b>Water Features (Nos.)</b>          |                       |
| 6                                     |                       |







# Six Flags Theme Park

**Location**  
Dubai Parks & Resorts

**Description**  
This thrill-based leisure & entertainment park was slated to be an addition to Dubai Parks and Resorts. It was planned and designed with 6 different themed zones based on its counterparts in the United States: Thrill Seeker Plaza, Magic Mountain, Fiesta Texas, Great Escape, Great Adventure and Great America.

- DEC Dynamic Design Studio Scope**
- Masterplanning & Infrastructure Design
  - Architectural & Engineering Design
  - Theming & Show Set Design
  - Rides & Attractions Design
  - Props & Public Art Design
  - Signage & Wayfinding Design
  - Construction Supervision & Contract Administration
  - Architect of Record (AOR) / Engineering of Record (EOR)

|                                       |                       |
|---------------------------------------|-----------------------|
| <b>Attractions &amp; Zones (Nos.)</b> | <b>F&amp;B (Nos.)</b> |
| 6                                     | 5                     |
| <b>Rides (Nos.)</b>                   | <b>Retail (Nos.)</b>  |
| 26                                    | 7                     |
| <b>Status</b>                         | <b>BUA (Sqm)</b>      |
| Suspended                             | 329,620               |











## New Themed Glamping Site

**Location**  
Dubai Parks & Resorts, Dubai, UAE

**Description**

With three theme parks and one waterpark, Dubai Parks and Resorts is one of the largest entertainments parks in the world. Visitors can discover more than 100 fun-packed indoor and outdoor rides and attractions at Motiongate Dubai, Bollywood Parks Dubai, Legoland Dubai and Legoland Water Park. Complementing this unique entertainment offer the Dinosaur Camp site will allow visitors to extend their stay and experience the excitement of sleeping in nature.

**DEC Dynamic Design Studio Scope**

- LeadConsultant, Design Development, Design Coordination and Architect of Record
- Contract Administration, Construction Administration  
(Supervision, architectural, interior, façade, soft/hardscape, infrastructure, structural & MEP),  
Environmental, Health & Safety, Quality Control & Quality Assurance

|                               |                            |
|-------------------------------|----------------------------|
| <b>Status</b><br>Ongoing      | <b>F&amp;B (Nos.)</b><br>2 |
| <b>Completion Year</b><br>TBD | <b>Retail (Nos.)</b><br>8  |
|                               | <b>BUA (Sqm)</b><br>45,607 |





Selected Projects in

# COMMERCIAL & INDUSTRIAL

DDN  
DYNAMIC DESIGN STUDIO

COMPANY PROFILE



Image Courtesy of M/s Santiago Calatrava -  
Architects and Engineers





Image Courtesy of M/s Santiago Calatrava - Architects and Engineers



## Dubai Creek Tower

**Location**  
Al Kheeran First, Dubai

**Description**

Dubai Creek Tower, an “elegant monument” designed by world renown designers M/s Santiago Calatrava - Architects and Engineers was envisioned to be the new tallest tower / man-made structure in the world once completed. The engineering marvel evokes the image of a minaret and is designed to include a distinctive net of steel cable stays that attach to a central reinforced concrete core.

- DEC Dynamic Design Studio Scope**
- Architect of Record (AOR) - Local Architect scoped with ensuring code compliance and obtaining local Authority approvals & permitting.
  - Engineer of Record (EOR) - Construction Supervision and obtaining inspection approvals required by local Authorities.

|                                      |                                       |                                       |
|--------------------------------------|---------------------------------------|---------------------------------------|
| <b>No. of Levels</b><br>Confidential | <b>Offices (Nos.)</b><br>Confidential | <b>F&amp;B (Nos.)</b><br>Confidential |
| <b>Status</b><br>Suspended           | <b>Parking (Nos.)</b><br>Confidential | <b>BUA (Sqm)</b><br>Confidential      |







# DP World Flow Central

**Location**  
Expo City, Dubai, UAE

**Description**

DP World Flow Central prioritize the needs and comfort of the occupants, with open and flexible spaces that encourage collaboration and creativity. The building provides ample amenities such as break areas, meeting rooms, and wellness facilities to support employee well-being and productivity. Overall, the design creates a cohesive company identity environment, with the new office complementing the existing pavilion to create a unified and functional whole.

- DEC Dynamic Design Studio Scope**
- Interior Design Concept & Schematic Design
  - Architectural & Engineering Concept Design
  - Construction Supervision & Contract Administration

|                        |                       |
|------------------------|-----------------------|
| <b>No. of Levels</b>   | <b>Parking (Nos.)</b> |
| G+8                    | 932                   |
| <b>Status</b>          | <b>F&amp;B (Nos.)</b> |
| Ongoing                | 2                     |
| <b>Completion Year</b> | <b>BUA (Sqm)</b>      |
| TBD                    | 28,486                |











## PCFC Headquarters

**Location**  
Maritime City, Dubai

**Description**  
Located in Maritime City Dubai, this brand new headquarters will accommodate the various business divisions of PCFC. The development includes both an office building and a multistory car parking which will be connected through link bridges.

- DEC Dynamic Design Studio Scope**
- Architectural & Engineering Concept Design
  - Interior Concept & Schematic Design
  - Construction Supervision & Contract Administration

|                                |                              |
|--------------------------------|------------------------------|
| <b>No. of Levels</b><br>G+7    | <b>Offices (Nos.)</b><br>141 |
| <b>Status</b><br>Completed     | <b>Parking (Nos.)</b><br>695 |
| <b>Completion Year</b><br>2024 | <b>BUA (Sqm)</b><br>19,284   |







# Drydocks Admin Office Building & Multistory Parking

**Location**  
Dubai Drydocks, Dubai, UAE

**Description**

The project is an innovative and contemporary 10-story office building located in the vibrant and rapidly developing Drydock area. The project comprises a main office building with 10 floors and an adjacent parking structure with six levels, topped by a two-story building. The design emphasizes functionality, sustainability, and connectivity to create a modern workspace for businesses and their employees. Additionally, the ground floor offers a dynamic mix of retail and food & beverage (F&B) spaces to serve the local community and the building's occupants.

- DEC Dynamic Design Studio Scope**
- Interior Design Concept & Schematic Design
  - Architectural & Engineering Concept Design
  - Construction Supervision & Contract Administration

|                        |                       |
|------------------------|-----------------------|
| <b>No. of Levels</b>   | <b>Parking (Nos.)</b> |
| G+9                    | 626                   |
| <b>Status</b>          | <b>F&amp;B (Nos.)</b> |
| Ongoing                | 2                     |
| <b>Completion Year</b> | <b>BUA (Sqm)</b>      |
| TBD                    | 62,183                |











# The Fresh Market

**Location**  
Abu Dhabi, UAE

**Description**  
The Fresh Market located in Abu Dhabi was designed as a modern take on a traditional “souk” and optimizes both the consumer and vendor experience. It includes state-of-the-art facilities for various types of fresh foods from the wholesale, retail and distribution perspectives.

**DEC Dynamic Design Studio Scope**  
→ Architectural & Interior Concept Design

|                                   |                              |
|-----------------------------------|------------------------------|
| <b>No. of Levels</b><br>G+2       | <b>Parking (Nos.)</b><br>564 |
| <b>Status</b><br>Design Completed | <b>F&amp;B (Nos.)</b><br>2   |
| <b>Completion Year</b><br>2022    | <b>BUA (Sqm)</b><br>11,590   |







# Trump International Golf Clubhouse

**Location**  
Dubai, UAE

**Description**

Trump International Golf Clubhouse in Damac Hills, Dubai, complements the magnificent golf course and world-class golf facilities. This 30,000 square foot clubhouse features the finest of amenities, such as a luxurious infinity swimming pool, an array of dining experiences ranging from upscale and sophisticated to laid back and casual, an expansive golf shop and a well-equipped fitness center.

**DEC Dynamic Design Studio Scope**

- Architectural & Engineering Design
- Construction Supervision & Contract Administration
- Architect of Record (AOR) / Engineering of Record (EOR)

**No. of Levels**  
G

**Parking (Nos.)**  
113

**Status**  
Completed

**F&B (Nos.)**  
5

**Completion Year**  
2017

**BUA (Sqm)**  
2,787







Selected Projects in

# RESIDENTIAL DEVELOPMENT

DDC  
DYNAMIC DESIGN STUDIO

COMPANY PROFILE









## Marina Views

( 3 Towers consisting of B+G+P+18, B+G+P+20 & B+G+P+22)

**Location**  
Rashid Yachts & Marina, Dubai, UAE

**Description**  
Marina Views is the new global destination for yacht and boat enthusiasts. A stunning waterside hub it offers a vibrant and luxurious experience in Dubai. This modern architectural community combines upscale residences, a comprehensive full-service marina, and a delightful mix of restaurants and shops, creating a unique waterfront lifestyle Residential options within this vibrant and truly unique community

**DEC Dynamic Design Studio Scope**  
→ Lead Consultant - Architecture, Interior & Engineering Design  
→ Construction Supervision & Contract Administration

|  |                              |
|--|------------------------------|
| <b>No. of Levels</b><br>3 Towers consisting of<br>B+G+P+18, B+G+P+20 &<br>B+G+P+22 | <b>Parking (Nos.)</b><br>717 |
| <b>Status</b><br>Ongoing   | <b>BUA (Sqm)</b><br>111,021  |
| <b>Completion Year</b><br>TBD  |                              |









# Dubai Creek Harbour - Bridge District

**Location**  
Dubai Creek Harbour, Dubai, UAE

**Description**  
  
Dubai Creek Harbour is an ultramodern, stylish, and pedestrian-friendly neighborhood that integrates with Dubai's sustainable urban character. Situated along the historic Dubai Creek, Dubai Creek Harbour consists of 7.4 million sqm of residential space and 500,000 sqm of parks & open spaces with a viable mix of retail, business, recreation, and community facilities

**DEC Dynamic Design Studio Scope**  
  
→ Lead Consultant - Architecture, Interior & Engineering Design  
→ Construction Supervision & Contract Administration

|                        |                       |
|------------------------|-----------------------|
| <b>No. of Levels</b>   | <b>Parking (Nos.)</b> |
| G+22                   | 218                   |
| <b>Status</b>          | <b>BUA (Sqm)</b>      |
| Completed              | 22,038.6              |
| <b>Completion Year</b> |                       |
| 2023                   |                       |











# Ritz Carlton Residences

**Location**  
Dubai, UAE

**Description**

Ritz Carlton Residences located in Business Bay, Dubai, is an ultra high-end luxury branded residential building which offers extravagant living supported by a host of amenities typical of the Ritz Carlton experience.

**DEC Dynamic Design Studio Scope**

- Architectural, Engineering & Interior Design
- Construction Supervision & Contract Administration
- Architect of Record (AOR) / Engineering of Record (EOR)

**No. of Levels**  
B+G+3P+18+R

**Pools (Nos.)**  
59

**Bedrooms (Nos.)**  
75

**Retail (Nos.)**  
2

**Status**  
Ongoing

**BUA (Sqm)**  
36,245

**Completion Year**  
2025







# Tiara Residences

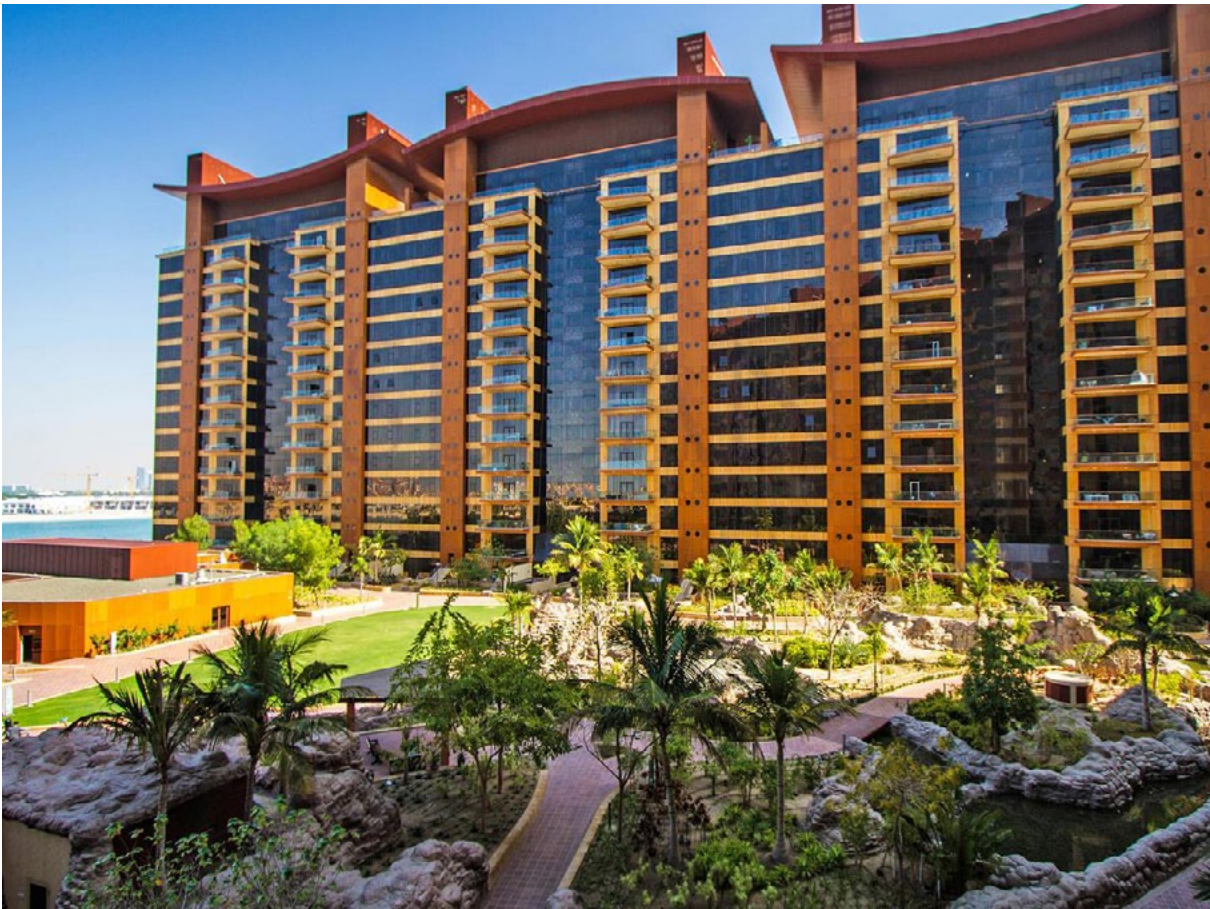
**Location**  
Palm Jumeirah, Dubai, UAE

**Description**  
The Tiara Residences Complex in Palm Jumeirah, Dubai, is a luxurious gated residential community that comprises of spacious apartments surrounded by the sea. This uniquely designed development includes a private beach-front area and a host of high-end leisure facilities.

- DEC Dynamic Design Studio Scope**
- Architectural, Engineering & Interior Design
  - Construction Supervision & Contract Administration
  - Architect of Record (AOR) / Engineering of Record (EOR)

|                        |                      |
|------------------------|----------------------|
| <b>No. of Levels</b>   | <b>Pools (Nos.)</b>  |
| 3B+2 Mezzanine+15+R    | 3                    |
| <b>Bedrooms (Nos.)</b> | <b>Retail (Nos.)</b> |
| 1,033                  | 2                    |
| <b>Status</b>          | <b>BUA (Sqm)</b>     |
| Completed              | 262,500              |

**Completion Year**  
2009











## South Bay Residences Phase 1 & 2

**Location**  
Dubai, UAE

**Description**

The project comprises 6 Clusters of Villas and Mansions, along with infrastructure, lagoon, 6 pools, landscaping, 2 Clubhouses and external works.

Cluster 1 consisting of 35 Mansion Villas, 146 Semi-detached Villas and 70 Townhouses  
Cluster 2 consisting of 19 Mansion Villas, 88 Semi-detached Villas and 38 Townhouses  
Cluster 3 consisting of 31 Mansion Villas, 94 Semi-detached Villas and 88 Townhouses  
Cluster 4 consisting of 24 Mansion Villas, 50 Semi-detached Villas and 64 Townhouses  
Cluster 5 consisting of 10 Mansion Villas, 62 Semi-detached Villas and 72 Townhouses  
Cluster 6 consisting of 29 Mansion Villas, 104 Semi-detached Villas and 56 Townhouses

**DEC Dynamic Design Studio Scope**

- Architect of Record and Engineer of Record
- Construction Supervision & Contract Administration



|                               |   |   |
|-------------------------------|---|---|
| <b>No. of Levels</b><br>G+1+R | <b>Mansions (Nos.)</b><br>148               | <b>Clubhouses (Nos.)</b><br>2                             |
| <b>Status</b><br>Ongoing      | <b>Townhouses (Nos.)</b><br>388             | <b>Site wide Infrastructure, Lagoon &amp; Landscaping</b> |
| <b>Completion Year</b><br>TBD | <b>Villas (Semi-Detached) (Nos.)</b><br>544 |   |







# La Rosa 5 & 6 at Villanova

**Location**  
Dubai, UAE

**Description**

Villanova located in Dubailand is a single-family residential community with educational, retail, religious and open space facilities. Organized around parks with green landscaped connections, La Rosa 5 & 6 offer 3- and 4-bedroom townhouses along with a poolhouse for each phase.

**DEC Dynamic Design Studio Scope**

- Construction Supervision & Contract Administration
- Architect of Record (AOR) / Engineering of Record (EOR)

|                        |                     |
|------------------------|---------------------|
| <b>No. of Levels</b>   | <b>Pools (Nos.)</b> |
| G+1                    | 2                   |
| <b>Bedrooms (Nos.)</b> | <b>Units (Nos.)</b> |
| 1,652                  | 488                 |
| <b>Status</b>          | <b>BUA (Sqm)</b>    |
| Completed              | 94,923              |
| <b>Completion Year</b> |                     |
| 2024                   |                     |











## La Violeta Phase 1 & 2

### Location

Dubai, UAE

### Description

The project consists of 470 townhouses with educational, retail, religious and open spaces to support the development. The development includes a number of green parks and 2 Nos pool houses.

### DEC Dynamic Design Studio Scope

- Architect of Record and Engineer of Record
- Construction Supervision & Contract Administration

### No. of Levels

G+1

### Pools (Nos.)

2

### Bedrooms (Nos.)

1,652

### BUA (Sqm)

91,974

### Status

Ongoing

### Completion Year

TBD







# Jumeirah Village Circle Villas - District 12

**Location**  
Jumeirah Village Circle, Dubai

**Description**  
The District 12 villa development located in Jumeirah Village Circle, Dubai, is a unique area of the Masterplan with residential units reflective of both contemporary & mediterranean themes.

- DEC Dynamic Design Studio Scope**
- Architectural, Engineering & Interior Design
  - Construction Supervision & Contract Administration
  - Architect of Record (AOR) / Engineering of Record (EOR)

|                        |                     |
|------------------------|---------------------|
| <b>No. of Levels</b>   | <b>Pools (Nos.)</b> |
| G+1                    | 4                   |
| <b>Bedrooms (Nos.)</b> | <b>Units (Nos.)</b> |
| 4                      | 700                 |
| <b>Status</b>          | <b>BUA (Sqm)</b>    |
| Completed              | 224,000             |
| <b>Completion Year</b> |                     |
| 2013                   |                     |







Selected Projects in

# LUXURIOUS VILLAS

DDC  
DYNAMIC DESIGN STUDIO

COMPANY PROFILE









# Villa AB

**Location**  
Dubai, UAE

**Description**  
Confidential private high-end villa located in Dubai, UAE.

**DEC Dynamic Design Studio Scope**  
→ Architectural & Interior Design  
→ Construction Supervision & Contract Administration

|                                |                              |
|--------------------------------|------------------------------|
| <b>No. of Levels</b><br>G+1    | <b>Bathrooms (Nos.)</b><br>8 |
| <b>Bedrooms (Nos.)</b><br>5    | <b>Pools (Nos.)</b><br>1     |
| <b>Status</b><br>Completed     | <b>BUA (Sqm)</b><br>1,500    |
| <b>Completion Year</b><br>2017 |                              |







# Villa AJ

**Location**

Ajman, UAE

**Description**

Confidential private high-end villa located in Ajman, UAE.

**DEC Dynamic Design Studio Scope**

- Architectural & Interior Design
- Construction Supervision & Contract Administration

**No. of Levels**

B+G+2

**Bathrooms (Nos.)**

13

**Bedrooms (Nos.)**

8

**Pools (Nos.)**

1

**Status**

Completed

**BUA (Sqm)**

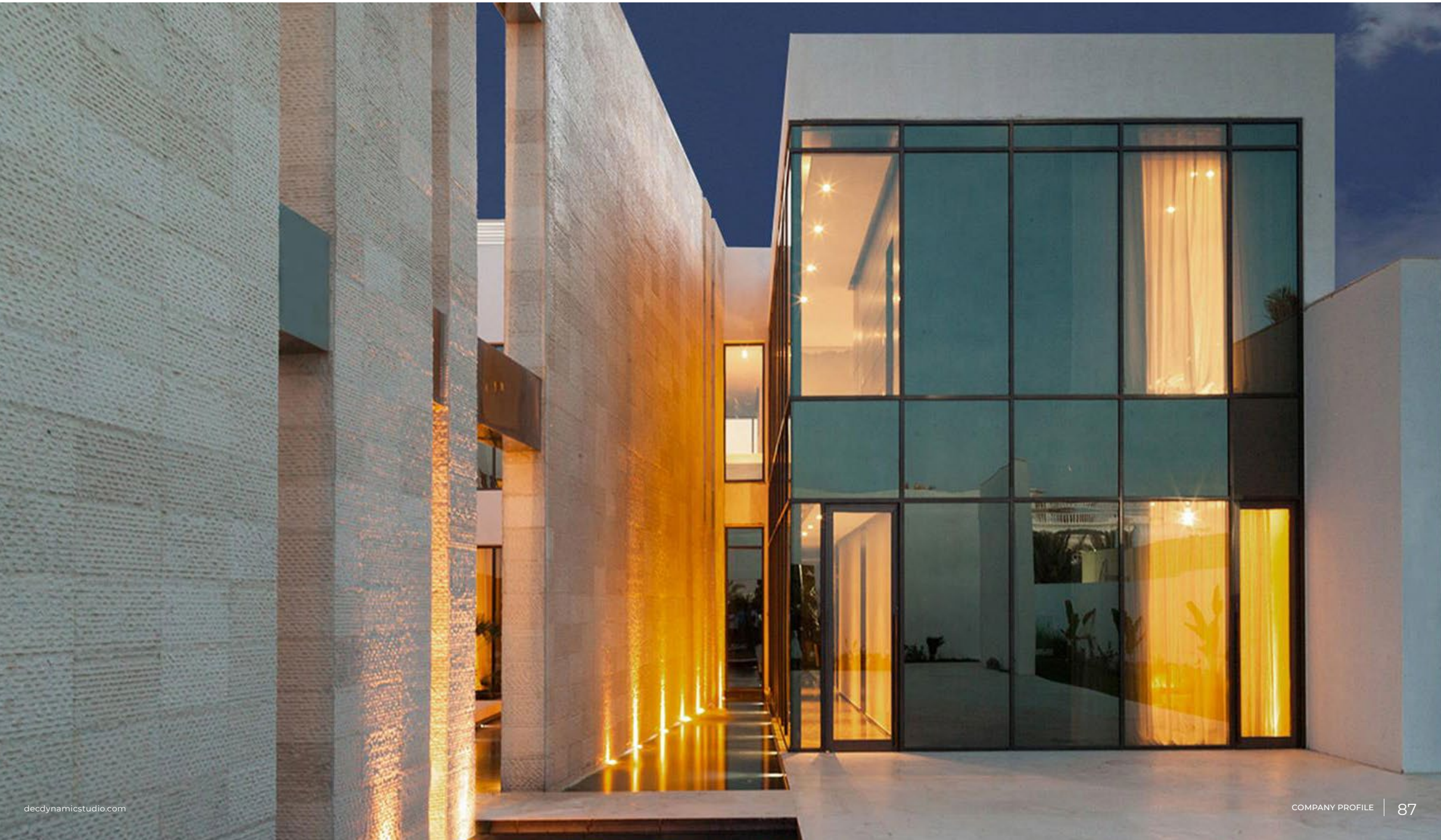
12,000

**Completion Year**

2018











## Villa B

**Location**  
Sharjah, UAE

**Description**  
Confidential private high-end villa located in Sharjah, UAE.

**DEC Dynamic Design Studio Scope**  
→ Architectural & Interior Design  
→ Construction Supervision & Contract Administration

|                                |                              |
|--------------------------------|------------------------------|
| <b>No. of Levels</b><br>B+G+1  | <b>Bathrooms (Nos.)</b><br>8 |
| <b>Bedrooms (Nos.)</b><br>6    | <b>Pools (Nos.)</b><br>1     |
| <b>Status</b><br>Completed     | <b>BUA (Sqm)</b><br>2,500    |
| <b>Completion Year</b><br>2015 |                              |







# Ocean Breeze Villas

**Location**  
Palm Jumeirah, Dubai

**Description**  
  
Located on the tip of Frond M, this collection of 5 landmark ultra luxury villas have been sold for some of the highest price points in the history of the Palm Jumeirah. Situated on over 50-meters of beachfront, these contemporary villas include floating steps and the longest private infinity pools on the Palm.

- DEC Dynamic Design Studio Scope**
- Architectural, Engineering & Interior Design
  - Construction Supervision & Contract Administration
  - Architect of Record (AOR) / Engineering of Record (EOR)

|                                 |                               |
|---------------------------------|-------------------------------|
| <b>No. of Levels</b><br>B+G+2+R | <b>Bathrooms (Nos.)</b><br>30 |
| <b>Bedrooms (Nos.)</b><br>25    | <b>Pools (Nos.)</b><br>5      |
| <b>Status</b><br>Completed      | <b>BUA (Sqm)</b><br>5,948     |
| <b>Completion Year</b><br>2016  |                               |











# Setta Villas

**Location**  
Palm Jumeirah, Dubai

**Description**  
Located on Frond N of the Palm Jumeirah, Setta Signature Villas is a collection of 6 modern contemporary villas designed to provide balance and harmony in a city that is constantly alive and active. Equipped with unique features such as show kitchens and sunken infinity pools these villas provide a unique sense of luxury rivaled by few.

- DEC Dynamic Design Studio Scope**
- Architectural, Engineering & Interior Design
  - Construction Supervision & Contract Administration
  - Architect of Record (AOR) / Engineering of Record (EOR)

|                                |                               |
|--------------------------------|-------------------------------|
| <b>No. of Levels</b><br>G+1    | <b>Bathrooms (Nos.)</b><br>36 |
| <b>Bedrooms (Nos.)</b><br>24   | <b>Pools (Nos.)</b><br>6      |
| <b>Status</b><br>Completed     | <b>BUA (Sqm)</b><br>3,785     |
| <b>Completion Year</b><br>2019 |                               |







# Villa NAH

**Location**  
Dubai, UAE

**Description**  
Confidential private high-end villa located in Al Awir, Dubai.

- DEC Dynamic Design Studio Scope**
- Architectural, Engineering & Interior Design
  - Construction Supervision & Contract Administration
  - Architect of Record (AOR) / Engineering of Record (EOR)

|                               |                              |
|-------------------------------|------------------------------|
| <b>No. of Levels</b><br>G+2   | <b>Bathrooms (Nos.)</b><br>7 |
| <b>Bedrooms (Nos.)</b><br>6   | <b>Pools (Nos.)</b><br>1     |
| <b>Status</b><br>Ongoing      | <b>BUA (Sqm)</b><br>870      |
| <b>Completion Year</b><br>TBA |                              |











## Villa NH

**Location**  
Dubai, UAE

**Description**  
Confidential private high-end villa located in Al Khwaneej, Dubai.

**DEC Dynamic Design Studio Scope**

- Architectural, Engineering & Interior Design
- Construction Supervision & Contract Administration
- Architect of Record (AOR) / Engineering of Record (EOR)

|                        |                         |
|------------------------|-------------------------|
| <b>No. of Levels</b>   | <b>Bathrooms (Nos.)</b> |
| B+G+1                  | 10                      |
| <b>Bedrooms (Nos.)</b> | <b>Pools (Nos.)</b>     |
| 7                      | 1                       |
| <b>Status</b>          | <b>BUA (Sqm)</b>        |
| Ongoing                | 1,575                   |
| <b>Completion Year</b> |                         |
| TBD                    |                         |







# Villa AFR

**Location**

Dubai, UAE

**Description**

Confidential private high-end villa located in Dubai, UAE.

**DEC Dynamic Design Studio Scope**

- Architectural & Interior Design
- Construction Supervision & Contract Administration

**No. of Levels**

G+1

**Bathrooms (Nos.)**

6

**Bedrooms (Nos.)**

3

**Pools (Nos.)**

1

**Status**

Ongoing

**BUA (Sqm)**

4,000

**Completion Year**

TBD











## Bulgari Promenade & Ocean View Residences

**Location**  
Dubai, UAE

**Description**

Concept design for a collection of 10 signature ocean-front residences located along the southern revetment of the Bulgari Masterplan in Dubai. The design was executed to take advantage of the unique luxury island setting with unobstructed views towards the Burj Al Arab and the rest of the Dubai skyline.

**DEC Dynamic Design Studio Scope**

→ Design Competition

**No. of Levels**  
G+1

**Bathrooms (Nos.)**  
80

**Bedrooms (Nos.)**  
50

**Pools (Nos.)**  
10

**Status**  
Completed

**BUA (Sqm)**  
8,700







# Selected Projects in **RETAIL**

**DDC**  
DYNAMIC DESIGN STUDIO

COMPANY PROFILE







# The World Island Beach Club

**Location**  
The World Islands, Dubai

**Description**  
Located in The World Islands off the coast of Dubai, The World Island Beach Club is an offshore entertainment destination designed to host an exciting array of activities and facilities. Consisting of a luxury restaurant, chalets and a swimming pool and surrounded by breathtaking views, this development provides a perfect opportunity for relaxation, luxury and adventure.

- DEC Dynamic Design Studio Scope**
- Architectural, Engineering & Interior Design
  - Construction Supervision & Contract Administration
  - Architect of Record (AOR) / Engineering of Record (EOR)

**BUA (Sqm)**  
153,000

**Status**  
Completed

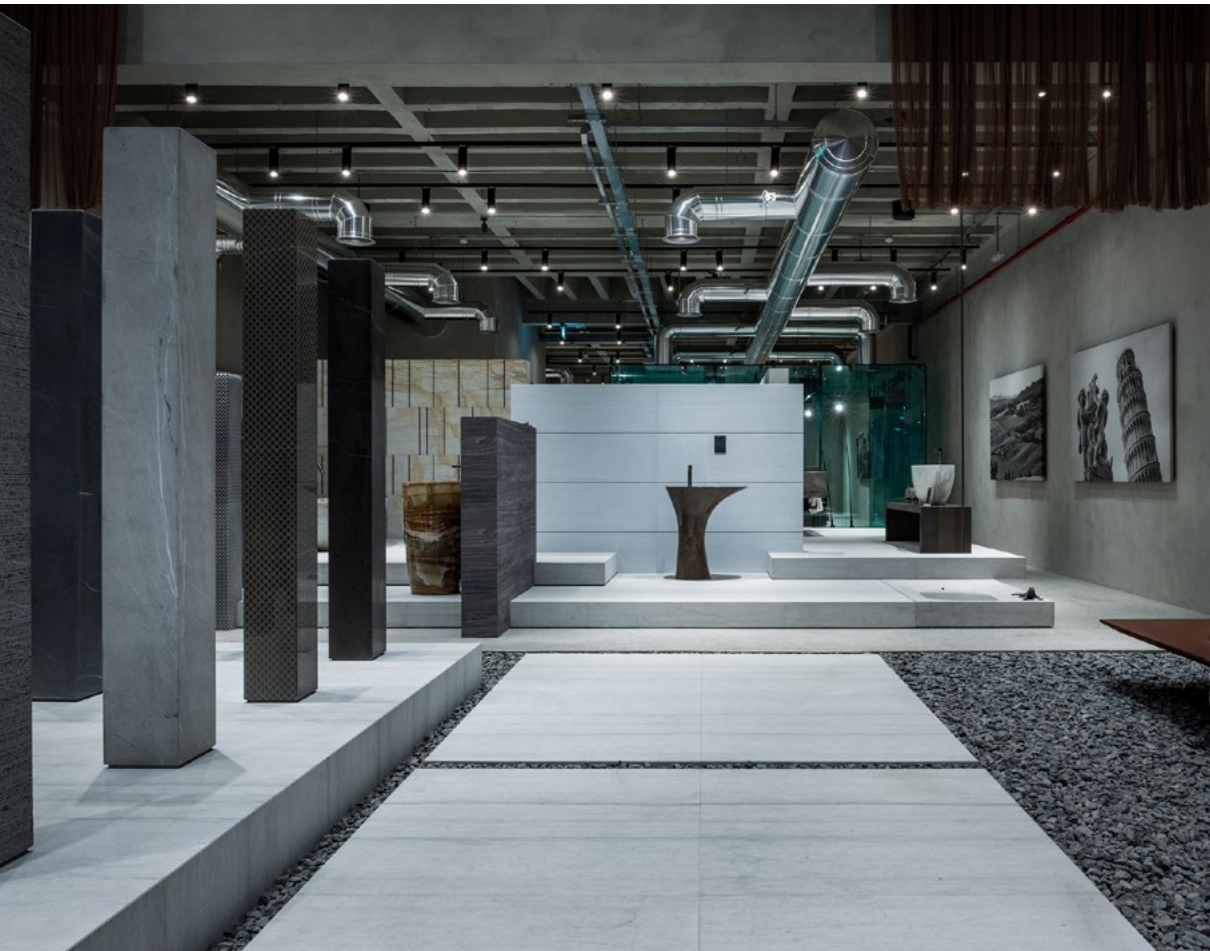
**Completion Year**  
2012











## Petraviva Showroom

**Location**  
Sheikh Zayed Road, Dubai

**Description**  
Located along Sheikh Zayed Road in Dubai, this interior fit-out project was executed to highlight Petraviva's 25 years of experience in the supply of high quality marble, quartz, limestone, onyx and granite, for domestic and commercial properties.

**DEC Dynamic Design Studio Scope**  
→ Architectural & Interior Design  
→ Construction Supervision

**BUA (Sqm)**  
250

**Status**  
Completed

**Completion Year**  
2018









# Red Shrimp Restaurant

**Location**  
UAE & KSA

**Description**

With several branches in both the UAE and KSA, Red Shrimp Restaurant’s fit-out has been designed to match its menu by bringing all elements of the sea together in a harmonious and succulent experience.

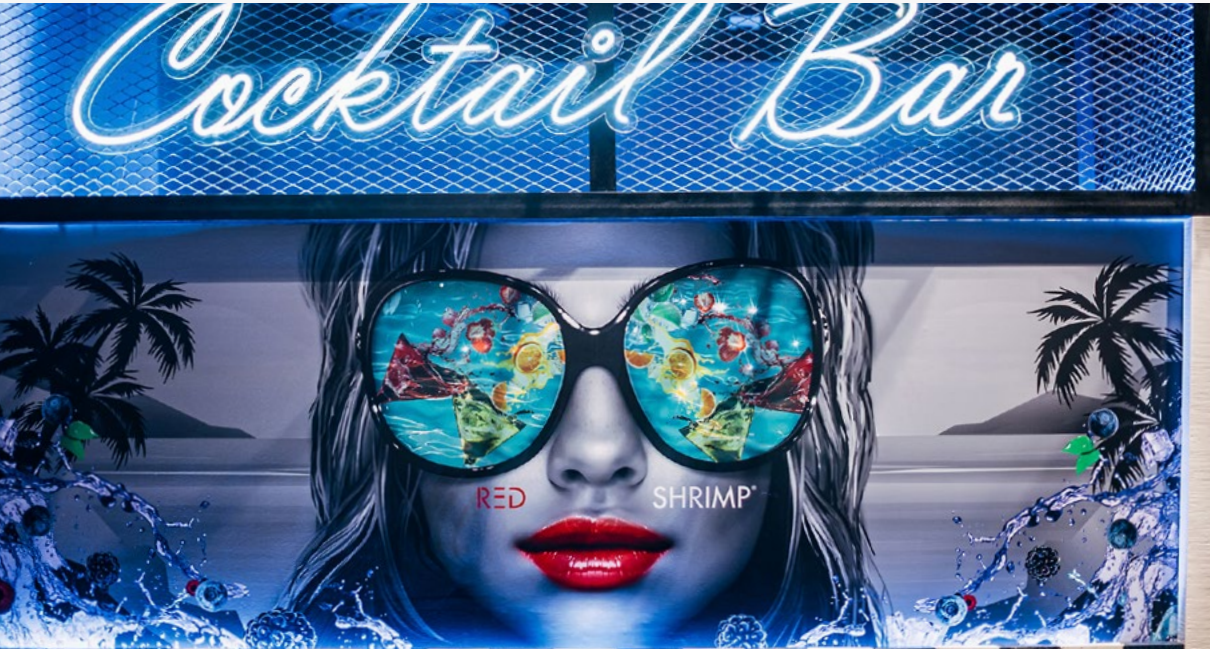
**DEC Dynamic Design Studio Scope**

- Architectural, Engineering & Interior Design
- Construction Supervision & Contract Administration
- Architect of Record (AOR) / Engineering of Record (EOR)

**BUA (Sqm)**  
270

**Status**  
Completed

**Completion Year**  
2020











## Mansion Discoteque

**Location**  
Dubai, UAE

**Description**

The Mansion Discoteque fit-out project located in Dubai provides international and elegant flair, suitable for both refined hotel guests and external customers.

**DEC Dynamic Design Studio Scope**

- Architectural & Interior Design
- Construction Supervision



**BUA (Sqm)**  
390

**Status**  
Completed

**Completion Year**  
2012







# Lashy

**Location**  
Dubai, UAE

**Description**  
Fit-out project of a high-end beauty salon located in Dubai catering to elite clientele.

- DEC Dynamic Design Studio Scope**
- Architectural, Engineering & Interior Design
  - Construction Supervision & Contract Administration
  - Architect of Record (AOR) / Engineering of Record (EOR)

**BUA (Sqm)**  
135

**Status**  
Completed

**Completion Year**  
2021











## Janeke Boutique

**Location**  
Milan, Italy

**Description**

Fit-out design of a luxury boutique jewelry store in Milan, Italy.

**DEC Dynamic Design Studio Scope**

- Architectural & Interior Design
- Construction Supervision

**BUA (Sqm)**  
55

**Status**  
Completed

**Completion Year**  
2014







# CREDENTIALS

Awards & Certification

DDN  
DYNAMIC DESIGN STUDIO

COMPANY PROFILE



DUBAI ONEHUNDRED SME

مبادرة من

مؤسسة محمد بن راشد للتجارة  
المشارية الصغيرة والمتوسطة  
DUBAI SME

إحدى مؤسسات دائرة التنمية الاقتصادية - دبي  
An Agency of the Department of Economic Development - Government of Dubai

نهى

دي إي سي للاستشارات الهندسية

لتصنيفها كأفضل

100 شركة صغيرة ومتوسطة في دبي،

ضمن أكثر من 4,500 شركة مرشحة

84

عبدالباسط الجناحي

المدير التنفيذي

مؤسسة محمد بن راشد  
للتجارة الصغيرة والمتوسطة

DUBAI ONEHUNDRED SME

An initiative by

مؤسسة محمد بن راشد للتجارة  
المشارية الصغيرة والمتوسطة  
DUBAI SME

إحدى مؤسسات دائرة التنمية الاقتصادية - دبي  
An Agency of the Department of Economic Development - Government of Dubai

We Congratulate

DEC Dynamic Engineering Consultants

Ranked among the

Top 100 SMEs in Dubai

out of more than 4,500 nominated businesses

84

Abdul Baset Al Janahi

Chief Executive Officer  
Dubai SME

dec DYNAMIC

ENGINEERING CONSULTANTS

Transforming Tomorrow

100  
مشارية  
مبادرة  
DUBAI SME

مؤسسة محمد بن راشد للتجارة  
المشارية الصغيرة والمتوسطة

Volume 1, No. 0004 // June 27, 2018

Copyright © 2018 DEC Dynamic Engineering Consultants

Office 2805 to 2808, Concord Tower, Dubai Media City, P.O. Box 75993 Dubai, UAE / Tel: + 971 4 298 9220 Fax: + 971 4 298 9210 www.decdynamicstudio.com

Dream Works Animation Zone at MOTIONGATE™ Dubai

The Themed Entertainment Association (TEA) awards DEC Dynamic Engineering Consultants

Nasser Al Hai

Chairman

DEC Dynamic Engineering Consultants,  
Dubai, UAE

With the great minds and team effort involved in DEC Dynamic Engineering Consultants, I am confident that we are at par with the global standards.

Thea Award for Outstanding Achievement - Themed Park Land

The DreamWorks Animation Zone at MOTIONGATE™ Dubai is an indoor land in the park featuring sub-lands focusing on DreamWorks animated intellectual properties (IP), immersing guests into "Shrek", "How to Train Your Dragon", "Madagascar", and "Kung Fu Panda".

Congratulations to everyone who shared their talents and creativity in making DreamWorks Animation Zone a success!

This Thea Award for Outstanding Achievement is Presented By  
The Themed Entertainment Association To  
DreamWorks Animation Zone at MOTIONGATE™ Dubai  
Dubai Parks and Resorts, UAE.

Nasser Al Hai  
DEC Dynamic Engineering Consultants - Chairman  
April 7, 2018

History of the Thea Awards

The establishment of the TEA Thea Awards as the preeminent award program recognizing excellence in themed entertainment projects was seminal to the recognition of themed entertainment as a professional industry. The Theas shine a bright light on the industry and its leaders, fabricators and creative geniuses who make themed entertainment magic.

- Themed Entertainment Association (TEA) founder Monty Lubbe, Techniflex

decdynamicstudio.com

COMPANY PROFILE | 115





## شكرو تقدير

يسرنا أن نتقدم لكم بخالص الشكر والتقدير  
إلى شركة

D . E . C DYNAMIC ENGINEERING

وذلك لجهودكم المتميزة وتعاونكم الدائم مع بلدية دبي

متمنين لكم دوام التوفيق والنجاح،،

السيد / إبراهيم يعقوب  
مدير إدارة العقود والمشتريات



## شكرو تقدير

يسرنا أن نتقدم لكم بخالص الشكر والتقدير  
إلى شركة

D . E . C DYNAMIC ENGINEERING CONSULTANTS

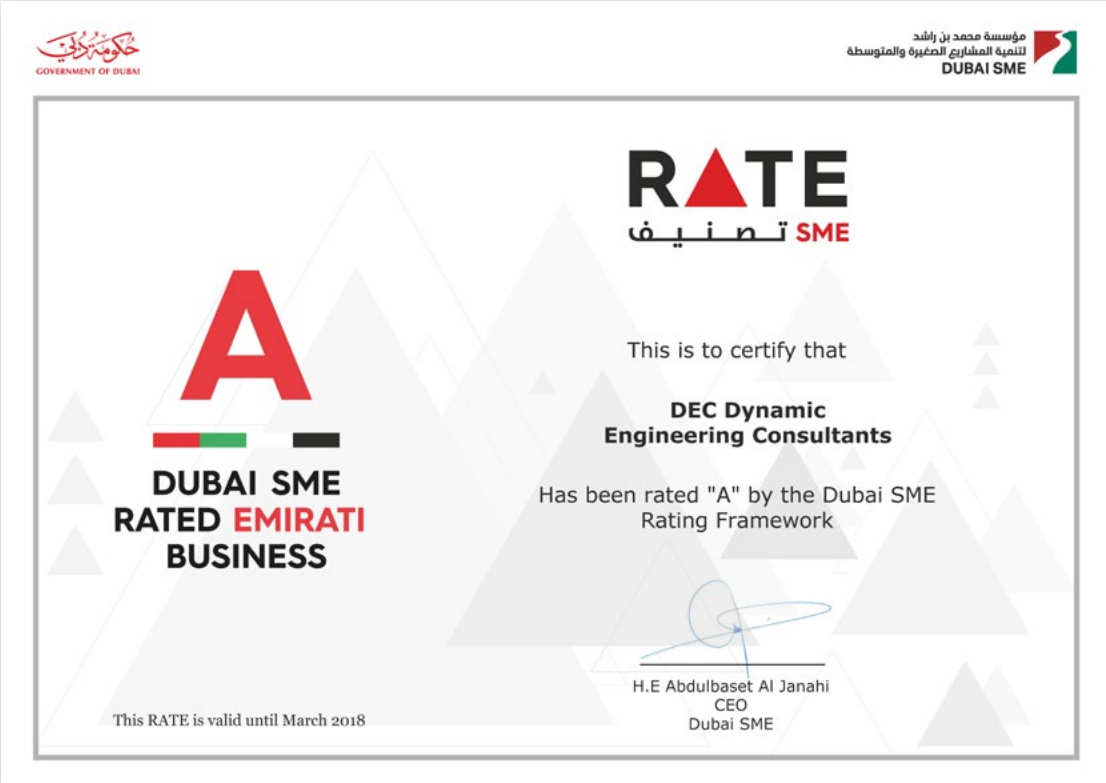
وذلك لجهودكم المتميزة وتعاونكم الدائم مع بلدية دبي

متمنين لكم دوام التوفيق والنجاح،،

السيد / أحمد عبيد الفلاسي  
مساعد مدير العام لقطاع الدعم المؤسسي















COMPANY PROFILE

Dubai, UAE

- +971 4 298 9220
- info@decdynamicstudio.com
- Office 2805 to 2808, Concord Tower, Media City, PO Box 79593, Dubai, UAE

Abu Dhabi, UAE

- info@decdynamicstudio.com
- Office 209 Shk. Rashid Bin Saeed St. Al Danah, Abu Dhabi, UAE

Riyadh, KSA

- +966 55 577 0747
- info-ksa@decdynamicstudio.com
- 6559 At Takhassusi St. Al Muhammadiyah Dist. Unit No 5 Riyadh 12361 KSA

DEC Dynamic Design Studio

©2023 decdynamicstudio  
All Rights Reserved.  
Follow us: [in](#) [yt](#) [ig](#)  
decdynamicstudio.com





DYNAMIC DESIGN STUDIO

---

COMPANY PROFILE

THANK  
YOU